

SUMMER, 2007

THE EPI VANGUARD

THE ROLLINS SCHOOL OF PUBLIC HEALTH
EPIDEMIOLOGY DEPARTMENT'S NEWSLETTER

From the Chair

Managing Editor
Bridgett Figueroa

<u>In This Issue:</u>	<u>Page</u>
FROM THE CHAIR	1
RESEARCH HIGHLIGHTS	2
GCC UPDATE	3
FACULTY PROFILE	4
AWARDS & RECOGNITION	5
GRANT FUNDING	6
ADJUNCT NEWS	7
FACULTY PRESENTATIONS	8
CENTER HIGHLIGHTS	10
STUDENT NEWS	12
RECENT PUBLICATIONS	13



Dr. Jack Mandel

I want to introduce our new faculty who will be joining us fall semester. Dr. Abhinav Goyal MD, MHS, assistant professor, is interested in coronary heart disease, stroke and diabetes in developing countries, Dr. Penny Howards, PhD, MS, assistant professor, is interested in reproductive outcomes and epidemiologic methods and Dr. Pamela Mink, PhD, MPH, assistant professor, is interested in cancer epidemiology and methods. We are delighted to welcome our new faculty members to the Rollins School of Public Health and hope you will all have an opportunity to meet them soon. You will hear more about them in upcoming issues of the Vanguard.

This issue reports on a number of new initiatives including the development of a research program in correctional health led by Dr. Spaulding, Dr. Buehler's CDC BioSense program to evaluate post-9/11 surveillance systems, and a number of new cancer studies including the Georgia Cancer Study, a cohort study of 140,000 people and studies on colorectal and prostate cancers. These cancer studies will help support the Winship Cancer Institute's P30 grant proposal which will be submitted in spring 2008. We welcome our new masters and doctoral students and look forward to another successful year.

RESEARCH HIGHLIGHTS



Dr. Anne Spaulding

Developing a Program for the Health of Incarcerated Persons

Anne Spaulding, MD, MPH, an infectious disease epidemiologist, has been building a research program in correctional health with a focus on the conduct of ethically responsible and scientifically rigorous health research in prisons, jails, and post-incarceration settings. The ultimate goal of these efforts is improvement in the health of those passing through correctional facilities.

Because of the heavy burden of HIV infection in the incarcerated population, HRSA initiated a five-year (\$18 million) ten site initiative to implement and evaluate enhanced linkages to HIV primary care in jail settings. In

September 2006, the agency selected Dr. Spaulding to serve as the Principal Investigator of an Evaluation and Support Center (ESC) for the initiative. Dr. Kimberly Jacob Arriola (Department of Behavioral Science and Health Education) is the project's Co-Investigator and Mr. Kevin Ramos serves as its Project Coordinator. Experts in jail health at Abt Associates are also collaborating on this initiative. Currently, the study team is preparing for HRSA's announcement in August regarding which jails across the US will serve as demonstration sites.

Some of Dr. Spaulding's other current projects are:

- **Pair4Success**—a proposed behavioral health intervention to assist HIV infected inmates leaving Georgia Department of Corrections. This is supported by a grant from the Emory's Center for AIDS Research for a pilot study.
- **Mortality Study**—with funding from the Pfizer Scholars Grant in Public Health Dr. Spaulding is conducting a retrospective study of mortality on inmates incarcerated in Georgia's prison system.
- **Arrestee Drug Abuse Monitoring II Project** – Dr. Spaulding is collaborating with Abt Associates in the conduct of a study on drug use in arrestees admitted to Fulton County and Atlanta City Jails.
- **Outcomes of Pregnancy in HIV Infected Incarcerated Women**—Emory's Office of University-

Community Partnerships has recently earmarked funding for a review of outcomes for women who were incarcerated in the Georgia Department of Corrections during their pregnancy.

- Preparing Prisons for Pandemic Influenza—see article elsewhere in this issue of Epi Vanguard on the upcoming conference for the Georgia Department of Corrections conference.

Research in the field of correctional public health is in a nascent stage. Dr. Spaulding's research program is evaluating how the criminal justice system affects community health.

GEORGIA CANCER STUDY (GCS) UPDATE



GCS Recruitment at the Roberta Relay for Life

The Georgia Cancer Study (GCS), a cohort study to investigate etiologic factors related to cancer, is midway through the pilot phase and progressing well.



Dr. Theresa Gillespie

Crisp Regional Medical Center was identified as the first site to partner with the GCS, along with the South West Georgia Cancer Coalition (SWGCC). The second pilot site has included Crawford and Bibb counties in central Georgia, in partnership with the Central Georgia Cancer Coalition. Several community-based events have been held in Southwest and Central Georgia for subject enrollment (these included health fairs, community festivals, employee workplace screenings, and school-related events).

In August the study shifted their focus on Atlanta and is now recruiting at Emory (August 14th and 20th) and at events throughout the Atlanta metro area. Study coordinators hope to finish the pilot phase soon and expand the study state-wide, with an overall goal of 140,000 study participants.

The GCS Principal Investigator is **Jack Mandel**, PhD, MPH, Chair of Epidemiology and the study is funded by the Georgia Cancer Coalition. For more information about the study, please go to www.GeorgiaCancerStudy.org or call 877-7ASKGCS (877-727-5427).

FACULTY PROFILE



James W. Buehler, MD

<http://www.sph.emory.edu/faculty/JBUEHLE>

As epidemiologists, we expect our work will inform and improve public health or healthcare practice. For those of us who work in surveillance, that expectation is built into the definition of what we do.

Dr. Jim Buehler is the Principal Investigator of a project funded by the CDC BioSense program to evaluate the utility of surveillance systems that CDC and health departments have implemented with post-9/11 resources. This includes substantial investments in highly automated systems aimed at early recognition and timely monitoring of epidemics. These systems – dubbed “syndromic surveillance” because they focus on indicators of disease that manifest before etiologic diagnoses are established – exploit the increasing automation of health information systems and integrate the disciplines of epidemiology, informatics, and biostatistics.

The project involves case studies to evaluate the impact of these new surveillance capacities on public health and healthcare practice in various actual or potential emergency situations,

including outbreaks, natural disasters, environmental exposures, and influenza seasons. As an example, interviews are conducted with epidemiologists and their colleagues in multiple disciplines at state and local health departments and hospital infection control practitioners, physicians, and disaster managers. The aim is to describe how they responded to various events, how public health and hospitals exchanged information, and the utility of various information sources, including traditional and newer methods of surveillance, in guiding their work.

Other projects include:

– A contract with the Georgia Division of Public Health to support surveillance programs. As noted in the **Winter 2006** issue of the *Epi Vanguard*, Dr. Buehler’s current primary activity is serving as the Division’s representative on the Georgia Health Information Technology & Transparency Advisory Board, which was charged by Governor Purdie to advise statewide efforts to improve the use of information technology in the service of healthcare and public health goals.

– Participation in a CDC-funded project with Dr. Kathy Miner to support and evaluate public-private partnerships in metro Atlanta for developing systems for rapid, emergency mass dispensing of medications or vaccines in the event of a public health crisis.

– A contract with the International Society for Disease Surveillance (www.syndromic.org) to support a CDC-funded project to create a national registry of syndromic surveillance systems and convene consultations that

address “logjam” issues in syndromic surveillance research or practice.

Dr. Buehler also serves in an advisory role on several projects, including the development of an automated call system for rapid assessment of epidemics, evaluation of influenza transmission risks in EDs, and description of mortality among prisoners in Georgia.

AWARDS & RECOGNITION



Dr. Andre J. Nahmias

Andre J. Nahmias MD, MPH - (EIS '58) Richard W Blumberg emeritus professor of Pediatric Infectious Diseases, Epidemiology and Immunology, and emeritus Professor of Public Health (epidemiology) has been honored recently with Emory establishing a Nahmias/Schinazi Distinguished Chair in Research. “Andy” has made many contributions to the epidemiology of infectious diseases, particularly HSV, HIV, *Staphylococcus aureus*, and perinatal infections and is currently working in the possible role of

infection as causes of some neuromental disorders, e.g., autism.

Besides involvement in basic and applied laboratory, clinical and public health research, Andy has been a pioneer in community and global aspects of policies regarding HIV/AIDS since 1983.

Both the Metropolitan Atlanta SEER Cancer Registry and the Georgia Comprehensive Cancer Registry were awarded the gold certification by the North American Association of Central Cancer Registries at its Annual Meeting in Detroit. Six staff members, Lynn Almon, Jan Kres, May Ting Liu, **Kevin Ward**, Phyllis Wilson, and **John Young**, were in attendance.



Dr. Michele Marcus

Dr. Michele Marcus was interviewed for the Atlanta Journal Constitution by Pulitzer Prize winning journalist, Jeff Nesmith. The title of the article is called “Common chemical rouses concern - Found in many products, BPA causes cancer, diabetes, ADHD, genital abnormalities in lab animals. Effect on humans is still unknown.”

Dr. Marcus was also interviewed for WebMD Medical News by Miranda

Hittle. The title of the article is called "Plastic Chemical Safety Weighed - Expert Panel Notes No Major Health Concerns About Plastic Chemical Bisphenol A.

You may view these articles at <http://www.ajc.com/metro/content/printedition/2007/08/03/bottle.html>, and at <http://www.webmd.com/news/20070808/plastic-chemical-safety-weighed>.

NEW GRANTS



Dr. Robin Bostick



Dr. Michael Goodman



Dr. David Kleinbaum



Dr. Dana Flanders

STUDY 1

This summer **Drs. Michael Goodman, Robin Bostick and David Kleinbaum and Dana Flanders** began work on a new study "*Oxidative Stress, DNA Repair & Colorectal Adenoma Risk*," which was recently funded by the National Cancer Institute. There is mounting evidence that the transformation of normal tissues of the colon and rectum into cancer is driven, at least in part, by oxidative stress. The new study will involve additional analyses of stored laboratory samples and data from two previously conducted, very similar, human studies of

colorectal "adenoma" involving 778 persons with adenomas and 920 persons who were disease-free at the time of the original studies. Adenomas are benign tumors that precede the vast majority of all colorectal cancers. Prevention of cancer at the stage of the adenoma provides a greater margin of safety against this potentially fatal disease. The two studies used nearly identical subject recruitment and data collection protocols, which involved collection and storage of biological samples to allow future analyses. The laboratory analyses for the new study will include measuring blood levels of dietary components known to protect against ROS (antioxidants); blood measures of iron intake, which increases oxidative stress; blood markers of chronic inflammation; and determining normal genetic differences between people that may reflect each individual's ability to produce ROS, defend against ROS, and repair damage caused by ROS.

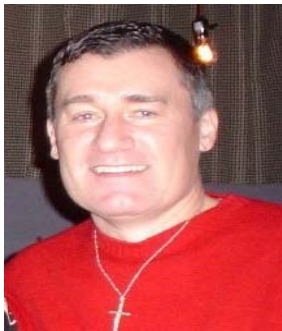
STUDY 2

In August the National Cancer Institute awarded funding for a new study "*Race, Comorbidity & Long Term Prostate Cancer Outcomes*," which is scheduled to begin this fall. The goal of this project is to better understand long-term (more than 10 years after diagnosis and treatment) health related quality of life in prostate cancer survivors. Emory University will serve as one study site that will interview participants in the original Prostate Cancer Outcomes study (PCOS). This project uses a population-based cohort which consists of 1,851 men aged 39-79 years who were residents of the metropolitan regions of Atlanta, Los Angeles, or Seattle, and the states of Connecticut, New Mexico or Utah who were diagnosed with invasive cancer of the prostate between October 1, 1994 and October 31, 1995; and who

completed their 5-year survey in 1999-2000. The Atlanta study site includes 379 of those patients. The study in Atlanta will be conducted by Dr. Goodman with the assistance of the research staff from the Georgia Center for Cancer Statistics. The study involves collecting survey data in a sociodemographically diverse population of prostate cancer survivors. When the data collection is complete, it will allow researchers to characterize the relation between race/ethnicity, socioeconomic status and other illnesses and long-term health related quality of life. This will be the longest population-based prospective follow-up of prostate cancer survivors reported to date. Taken as a whole, these analyses will provide important information for prostate cancer survivors and physicians to when choosing primary therapy and following initial treatment.

Dr. Michele Marcus is co-investigator of a grant funded by NCI entitled: Polybrominated Biphenyls and Cancer Risk.

ADJUNCT NEWS



Dr. Steven Coughlin

Dr. Steven Coughlin has been appointed to the Editorial Board of *The Open Epidemiology Journal* which is a new open access epidemiology journal published by Bentham Science Publishers www.bentham.org. Dr. Coughlin has been an Associate Editor of the *American Journal of Epidemiology* since 1995.

Martin Cetron, Division of Global Migration and Quarantine, announce an article titled "Non-Pharmaceutical Interventions Implemented by 43 U.S. Cities during the 1918-1919 Influenza Pandemic" by Howard Markel, Harvey Lipman, J Alexander Navarro, Alexandra Sloan, Joseph Michaelson, Alexandra Stern and Martin Cetron was accepted for JAMA.



Introducing Dr. Marji McCullough

Dr. Marji McCullough, ScD, RD, is Strategic Director, Nutritional Epidemiology in the Epidemiology and Surveillance Research department at the American Cancer Society, which just moved its national headquarters to

downtown Atlanta. She has twice served on the American Cancer Society Nutrition and Physical Activity Guidelines Advisory Committee, and recently participated in the World Cancer Research Fund/American Institute for Cancer Research's systematic literature review of nutrition, physical activity and cancer (for endometrial cancer), due out this Fall.

Dr. McCullough earned a B.S. in Dietetics from Michigan State University, an MS in Clinical Dietetics from the MGH Institute of Health Professions, and earned a Doctorate in Nutritional Epidemiology from the Harvard School of Public Health. Her current research focus is on diet and cancer, and she has a particular interest include calcium, vitamin D and dietary guidelines. She is a co-investigator on a grant with **Dr. Robin Bostick** studying vitamin D pathway genes, metabolizing enzymes and colorectal carcinogenesis using immunohistochemistry and collaborating with **Dr. Paul Terry** on analyses of diet, obesity and esophageal and gastric cancers, by subsite. Prior to joining the ACS in 1999, Dr. McCullough worked on clinical trials (e.g. the Dietary Approaches to Stop Hypertension, "DASH" study) and conducted field work on diet and blood pressure in the Kuna Indians of Panama.

FACULTY PRESENTATIONS

Lyles R, Wannemuehler K, Manatunga A, Moore R, Terrell, **Marcus M.** Relating a health outcome to subject-specific characteristics of left- or interval-censored longitudinal exposure

data. Eastern North American Region (ENAR) Biometrics Society, Atlanta.

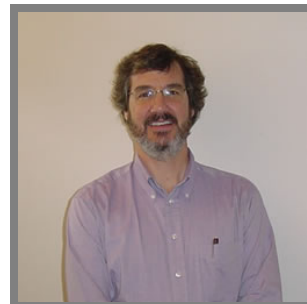
Marcus M. Pubertal development in the ALSPAC cohort and endocrine disruption. Invited presentation, University of Bristol, England, May 4.

Anderson B, Wirth J, Cameron L, **Marcus M**, Small C, O'Keefe M, Hoffman C. Endometriosis among women exposed to specific PCB congeners, Poster at Michigan Public Health Association conference, Ann Arbor, Michigan, April, 2007.

Marcus M. Reproductive epidemiology and bisphenol A. Chromosomes, Reproduction and the Environment. May 17-20, Spokane, Washington.

Marcus M. Invited panel discussant: Science linking environmental contaminant exposures with fertility and reproductive health impacts in the adult female. UCSF – CHE Summit on Environmental Challenges to Reproductive Health and Fertility. January 28-30, San Francisco.

Dr. Kevin Sullivan participated in the following presentations:



Dr. Kevin Sullivan

Sullivan KM, Mei Z, Grummer-Strawn L, Parvanta I. Hemoglobin adjustments to define anemia. Consequences and

Control of Micronutrient Deficiencies, Micronutrient Forum, Istanbul Turkey, 16-18 April 2007.

Alasfoor D, Ruth LJ, **Sullivan KM**, Parvanta I, Kaur M, Al-Hatmi FO, Suleiman AJM. Micronutrient status and fortification efforts in Oman: 2004 national survey results. Consequences and Control of Micronutrient Deficiencies, Micronutrient Forum, Istanbul Turkey, 16-18 April 2007.

Tripp K, Woodruff BA, **Sullivan K**, Elbon S, Gorstein J, Begin F, Parvanta I. Development of a toolkit and a manual for use in the assessment of vitamin and mineral status of populations. Consequences and Control of Micronutrient Deficiencies, Micronutrient Forum, Istanbul Turkey, 16-18 April.

Mahmood SN, Assefa F, Ruth LJ, **Sullivan KM**, Parvanta I. Micronutrient status and awareness and food fortification in Afghanistan: 2004 National Survey results. Consequences and Control of Micronutrient Deficiencies, Micronutrient Forum, Istanbul Turkey, 16-18 April 2007.

Alasfoor D, Parvanta I, Ruth LJ, **Sullivan KM**, Suleiman AJM. Impact of Flour Fortification: Lessons from Oman. Consequences and Control of Micronutrient Deficiencies, Micronutrient Forum, Istanbul Turkey, 16-18 April 2007.

Mahmood SN, Assefa F, Ruth LJ, **Sullivan KM**, Parvanta I. Vitamin A: Indicators of deficiency, capsule coverage, awareness, and possible food vehicles in Afghanistan: 2004 National Survey results. Consequences and

Control of Micronutrient Deficiencies, Micronutrient Forum, Istanbul Turkey, 16-18 April 2007.

Kharabsheh S, Qarqash W, Belbeisi A, Hijawi B, Al Faqih A, Al Kateeb I, Walke H, **Sullivan K**. Results of a national survey on iron and vitamin A deficiency, Jordan 2002. Consequences and Control of Micronutrient Deficiencies, Micronutrient Forum, Istanbul Turkey, 16-18 April 2007.

Dr. David Kleinbaum participated in the following presentations:

"Screening variables when modeling epidemiologic data," presented at the University of Texas School of Public Health, Houston, Texas, on Feb 21, 2007.



David Kleinbaum

"ActivEpi- a demonstration of a unique electronic textbook on CD ROM", Invited talk by **David Kleinbaum** presented at the University of Texas School of Public Health, Houston, Texas, on Feb 21, 2007.

"Assessing Confounding and Interaction Using Mathematical Modeling," Invited talk by **David Kleinbaum** presented at the MD Anderson Cancer Institute, Houston, Texas, on Feb 22, 2007.

Dr. Kleinbaum attended the Faculty Meet at Association of Schools of Public Health (ASPH) to Discuss Public Health Academy of Distinguished Teachers.

Staras SAS, Flanders WD, Dollard SC, Pass RF, **McGowan JE Jr**, Cannon MJ Jr. Cytomegalovirus infection in US school-aged children. Society for Epidemiologic Research, 40th Ann Meeting of the Society for Epidemiologic Research, Boston, MA, June 19-22, 2007, abstract 485.



Robin Bostick

Dr. Robin Bostick served as a consultant at the NCI Workshop on Vitamin D and Cancer: Current Dilemmas/Future Needs, May 2007.



Ruth Berkelman

Dr. Ruth Berkelman participated in a press conference and gave an invited presentation on multi-drug resistant tuberculosis at a symposium at the American Society for Microbiology in Toronto, Canada at the end of May, one week before Andrew Speaker became infamous.

Center for Public Health Preparedness and Research



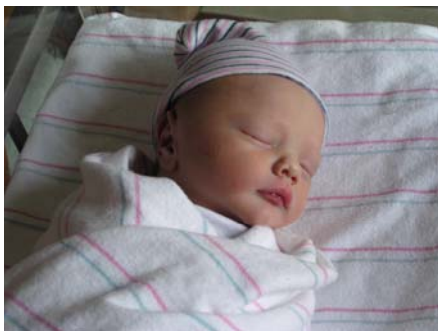
Pandemic Influenza Planning in the Correctional Setting

As noted above, The Center for Public Health Preparedness and Research (CPHPR) is partnering with the Georgia Department of Corrections (GDC) and the Georgia Division of Public Health to conduct exercises for medical directors, health service administrators and others in health leadership positions within Georgia Correctional Healthcare and GDC to address pandemic influenza preparedness in a prison setting. **Anne Spaulding, Ellen Whitney, James Buehler, and Ruth Berkelman** are directing the planning for this HRSA-funded activity.

Preparedness planning for pandemic influenza is at a nascent stage in the prison system and we are unaware of formal planning efforts, including research, education or training exercises related to pandemic influenza preparedness tailored for the health provider community in prisons in Georgia. A literature review and outreach efforts have indicated that such preparation has not occurred to a major extent in prisons. CDC is working on pandemic influenza planning for prisons and we are in contact with them about their work.

The training is planned for this fall in Macon, GA. A second training may be considered for the spring of 2008.

CONGRATULATIONS!



Ellen Whitney, MPH, and her husband, Armistead, welcomed with great love and joy Armistead Carlton Whitney, born Monday, July 23rd 2007 at 1:12pm. Carlton weighed in at 6 lbs 15 ounces, and was 20 inches long. Both Ellen and Carlton are healthy and doing well.

GEORGIA CENTER FOR CANCER STATISTICS



Dr. John Young

The Georgia Center for Cancer Statistics as the agent of the Georgia Comprehensive Cancer Registry is currently participating in a Patterns of Care Study through the CDC's National Program of Cancer Registries. Re-abstraction of medical records is almost ready to begin on approximately 2,500 breast and 2,500 prostate cancer cases diagnosed in the state of Georgia during 2004. As a collaborative effort with 6 other state cancer registries, this study will focus on the initial patterns of treatment received by breast and prostate cancer patients across different regions of the US. Concordance with nationally recognized treatment guidelines will be examined in light of extensive data collected on patient comorbidities. Validation of existing registry data will also be conducted to highlight the strengths and weaknesses of standard methods of data collection.

Of note, the GCCS was awarded a training contract by the Texas Department of Health Services to provide training to the staff of the Texas Cancer Registry.

Dr. Young has been invited to serve on a Scientific Review Committee to review the activities of the Biostatistics and Epidemiology Program of the International Agency for Research on Cancer in Lyon, France.

Ms. Tanya Landy recently completed her internship for the Health Information Technology Program of DeVry University by spending 80 hours working with staff of the Georgia Center for Cancer Statistics.

EPI'S WOMEN & CHILDREN'S CENTER



Dr. Karen Bell

WCC held an appreciation dinner for Karen Bell, our Associate Director, who is moving to Massachusetts with her husband, Peter Bell (retired director of CARE), at the end of the summer.

STUDENT NEWS



Kira Taylor

Kira Taylor (PhD student) successfully defended her dissertation proposal entitled: Genetic and environmental influences on reproduction. Dr. Michele Marcus served as chair. Committee members were: Chanley Small, Dana Flanders, Celia Dominguez, Michael Epstein and Stephanie Sherman.

**PLEASE SEE THE EPI
DEPT. PUBLICATION
LIST BELOW!**

EPI DEPARTMENT
RECENT PUBLICATIONS & ARTICLES IN PRESS

Ahearn TU, Shaukat A, Dash C, Bostick RM. E-cadherin and APC expression in normal-appearing rectal mucosa between cases of incident, sporadic colorectal adenomatous polyps and healthy controls in the Markers of Adenomatous Polyps II (MAPII) case-control study. *Proc AACR* 2007; 48:407.

Allen E, Sullivan A, Marcus M, Small C, Dominguez C, Epstein M, Charen K, He W, Taylor K, Sherman S. Examination of reproductive aging milestones among women who carry the FMR1 premutation. In Press, *Human Reproduction*.

Brown V, Checchi F, Depoortere E, Grais RF, Greenough PG, Hardy C, Moren A, Richardson L, Rose AMC, Soleman N, Spiegel PB, Sullivan KM, Tatay M, Woodruff BA. Wanted: studies on mortality estimation methods for humanitarian emergencies - suggestions for future research. *Emerging Themes in Epidemiology* 4(1):9, 2007 (June).

Cole BF, Baron JA, Sandler RS, Haile RW, Ahnen DJ, Bresalier RS, McKeown-Eyssen G, Summers RW, Rothstein RI, Burke CA, Snover DC, Church TR, Allen JI, Robertson DJ, Beck GJ, Bond JH, Byers T, Mandel JS, Mott LA, Pearson LH, Barry EL, Rees JR, Marcon N, Saibil F, Ueland PM, Greenberg ER, for the Polyp Prevention Study Group. A randomized trial of folic acid for the prevention of colorectal adenomas. *JAMA* 2007;297:2351-9

Cox S, Niskar AS, Narayan V, Marcus M. Prevalence of self-reported diabetes and exposure to organochlorine pesticides among Mexican Americans: Hispanic Health and Nutrition Examination Survey 1982-1984. *Environmental Health Perspectives*, In Press.

Daniel CR, Gonzalez-Feliciano A, Fedirko V, Dash C, Shaukat A, Bostick RM. Western diet and lifestyle risk factors and colon crypt expression of TGF α , TGF β ₁, and TGF β RII in the Markers of Adenomatous Polyps II case-control study. *FASEB J* 2007; 21:358.8.

Dash C, Shaukat A, Flanders WD, Long Q, Fedirko V, Cohen VL, Bostick RM. Relationship between APC and Cyclin D1 expression in patients with and without colorectal adenoma: a modeling approach using the Wnt pathway. *Proc AACR Special Conference: Approaches to Complex Pathways in Molecular Epidemiology* 2007; B1.

Fedirko V, Daniel C, Dash C, Bostick RM. Markers of differentiation, apoptosis, dietary oxidative stress, inflammation and B-vitamins in the Markers of Adenomatous Polyps II Case-Control Study. *Proc AACR* 2007; 48:397.

Givens M, Small C, Terrell M, Cameron L, Blanck HM, Tolbert P, Rubin C, Henderson A, Marcus M. Maternal exposure to polybrominated and polychlorinated biphenyls: Infant birth weight and gestational age. *Chemosphere*, In Press.

Coughlin SS. Ethics of screening. Invited article for Encyclopedia of Public Health, edited by K. Heggenhougen, (in press).

Coughlin SS, Leadbetter S, Richards T, Sabatino S. Contextual analysis of breast and cervical cancer screening and factors associated with access to health care among United States women. *Social Science & Medicine*, in press.

Coughlin SS. Surviving cancer or other serious illness. A review of personal and community factors. *CA: A Cancer Journal for Clinicians*, in press.

Coughlin SS. Using cases with contrary factual information to illustrate and facilitate ethical analysis: can one make a difference? *Science and Engineering Ethics* 2007, in press.

Goodman M, Bostick RM, Dash C, Flanders WD, Mandel JS. Oxidative stress score as a combined measure of pro- and anti-oxidant exposures. *Ann Epidemiol* 2007; 17:394-399.

Goodman M, Bostick RM, Dash C, Terry P, Flanders D, Mandel J. A summary measure of pro- and anti-oxidant exposures in relation to colorectal adenoma. *Proc AACR Special Conference: Approaches to Complex Pathways in Molecular Epidemiology* 2007; B3.

Hall IJ, Mosby-Hall AL, Coughlin SS. The prevalence of family history of breast and ovarian cancer among women in the United States: implications for genetic testing and counseling. *Morbidity and Mortality Weekly Report* 2007 in press.

Kapogiannis BG, Soe MM, Nesheim SR, Sullivan KM, Abrams E, Farley J, Palumbo P, Koenig LJ, Bulterys M. Infectious diseases in the pre- and post-HAART era among HIV-infected children in the U.S. Perinatal AIDS Collaborative Transmission Study (1986-2004): trends in bacteremia. *JAMA*, in press.

Nesheim SR, Kapogiannis BG, Soe MM, Sullivan KM, Abrams E, Farley J, Palumbo P, Koenig LJ, Bulterys M. Infectious diseases in the pre- and post-HAART era among HIV-infected children in the U.S. Perinatal AIDS Collaborative Transmission Study (1986-2004): Trends in opportunistic infections. *Pediatrics*, in press.

Sidelnikov E, Dash C, Fedirko V, Bostick RM. MLH1 levels in colon crypts and colon cancer risk factors in the markers of adenomatous polyps II case-control study. *Proc AACR* 2007; 48:407-408.

Small CM, Manatunga A, Marcus M. Validity of self-reported menstrual cycle length. *Annals of Epidemiology* 17(3):163-70, 2007.

Stone ND, O'Hara CM, Williams PP, McGowan JE Jr, Tenover FC. Comparison of disk diffusion, VITEK 2, and broth microdilution antimicrobial susceptibility testing results for unusual species of Enterobacteriaceae. *J Clin Microbiol* 2007; 45: 340-346.

Sullivan KM, Dean A, Soe MM. OpenEpi Version 2. *The Epidemiology Monitor*, 28 (5):1, 9-10, 2007 (May).

Sullivan KM. Iodine supplementation for pregnancy and lactation: United States and Canada: recommendations of the American Thyroid Association. *Thyroid* 17(5):483-484, 2007 (May) – Letter to the Editor.

Sullivan KM. Overview of Free Analytic Software for Epidemiologists. *The Epidemiology Monitor*, 28 (4): 2007 (April).

Tenover FC, Vaughn RR, McDougal LK, Fosheim GE, McGowan JE Jr. Multiple locus variable number tandem repeat assay analysis of methicillin-resistant staphylococcus aureus strains. *J Clin Microbiol* 2007; 45: 2215-2219.

Vandenberg LN, Hauser R, Marcus M, Olea N, and Welshons WV. Human exposure to bisphenol A. In Press, *Reproductive Toxicology*.

vom Saal FS, Akingbemi BT, Belcher SM, Birnbaum LS, Crain DA, Eriksen M, Guillette LJ, Hauser R, Heindel JJ, Ho SM, Iguchi T, Jobling S, Kanno J, Keri RA, Knudsen KE, LeBlanc GA, Marcus M, McLachlan JA, Peterson Myers J, Nadal A, Newbold RR, Olea N, Prins GS, Richter CA, Rubin BS, Sonnenschein C, Soto AM, Talsness CE, Vandenberg JG, Vandenberg LN, Walser-Kuntz DR, Watson CS, Welshons WV, Wetherill Y, Zoeller RT. Chapel Hill Bisphenol A Expert Panel Consensus Statement: Integration of mechanisms, effects in animals and potential to impact human health at current levels of exposure. In Press, *Reproductive Toxicology*.

Wolf LA, Terry PD, Potter JD, Bostick RM. Do factors related to endogenous and exogenous estrogens modify the relationship between obesity and risk of colorectal adenomas in women? *Cancer Epidemiol Biomarker Prev* 2007; 16:676-683.

Published Articles Whose First Authors Are Emory SPH Graduates

Bardenheier B, Kong Y, Shefer A, Zhou F, Shih S. Managed care organizations' performance in delivery of childhood immunizations, HEDIS®, 1999-2002. *AJMC* 2007;13:193-200.

Bardenheier B, Strikas R, Kempe A, Stokley S, Ellis J. Did we come up short? Influenza Vaccine Supply, 2005-2006: *BMC Health Services Research* 2007;7:66 (Provisional)

Bardenheier B, Wortley P, Winston CA, Washington ML, Lindley MC, Sapsis K. Do Patterns of Knowledge and Attitudes Exist Among Unvaccinated Seniors? *American Journal of Health Behavior*. 2006;30:675-683.

Sand K, Lynn J, Bardenheier B, Seow H, Nace D. Increasing Influenza Immunization for Long-Term Care Facility Staff using Quality Improvement. 2007 In Press: JAGS.

Shimabukuro T, Wortley P, Bardenheier B, Bresnitz E, DeBlois A, Hahn C, Mangione E. Survey of State Practices During the 2004–05 Influenza Vaccine Shortage. *PHR*.2007;122:311-18.

Shugarman L, Hales C, Setodji CM, Bardenheier B, Lynn, J. The Influence of Staff and Resident Immunization Rates on Influenza-Like Illness Outbreaks in Nursing Homes. *JAMDA*. 2006;7:562-7.

Simard, Edgar P., MPH; Miller, Jeremy T., MA; George, Prethibha A., MPH; Wasley, Annemarie, ScD; Alter, Miriam J., PhD; Bell, Beth P., MD, MPH; Finelli, Lyn, DrPH, MS. Hepatitis B Vaccination Coverage Levels Among Healthcare Workers in the United States, 2002-2003. *Infection Control and Hospital Epidemiology*, July 2007, vol. 28, no. 7.

Viel, Kevin R, Machia, Deepa K., Warren, Diane M., Khachidze, Alfonso Buil, Fernstrom, Karl, Souto, Juan C., Peralta, Juan M., Smith, Todd, Blangero, John, Porter, Sandra, Warren, Stephen T., Fountcuberta, Jordi, Soria, Jose M., Flanders, W. Dana, Almasy, Laura, Howard, Tom E.. A sequence variation scan of the coagulation factor VIII (FVIII) structural gene and associations with plasma FVIII activity levels. *Blood*, Journal of the American Society of Hematology, May 2007, Vol. 109, No. 9, pg. 3713-3724. The link to the PDF is <http://bloodjournal.hematologylibrary.org/cgi/reprint/109/9/3713>.